

DYMCHURCH NEWS

PUBLISHED BY
DYMCHURCH PARISH COUNCIL

ISSUE JULY 2021
FOR INFORMATION ON THIS
NEWSLETTER CONTACT THE
EDITOR AT
dymchurchpc@outlook.com



MESSAGE FROM THE CHAIR CLLR CHRIS McCREEDY

As the new Chairman of the Parish Council I must thank Deana Coker for all her hard work during her period as Chairman. As you wander along the High Street it is good to see the colourful hanging baskets, just one of the many things she had organised, working with a local charity, The Canterbury Oast Trust that supplied and planted these baskets. This is just one example of where Deana and the Council as a whole try to work with local organisations bringing mutual benefits to all.

Over the last couple of months we have slowly seen the village come back to life as restrictions have begun to lift and I am sure there will be an upsurge in visitors. Like me, you are probably still very cautious, but talking to residents they all appreciate living where we do and really feel for those families living in flats that have not had the benefits our environment offered during this difficult time.

We also thank all those people both professional and volunteers who have worked hard and continue to ensure the delivery of vaccinations throughout the district. I hope you enjoy the rest of the summer reunited with family and friends after such a long time.

FOLKESTONE AND HYTHE STREET FUND

The District Council has established a High Streets grant scheme to support improvements and encourage new and innovative ideas to help our high streets adapt and thrive in the future. Grants from between £5000 to £50000 are available. An application has been made by the Parish Council to landscape the area near the main slip way. If you have a commercial property that needs sprucing up, bringing back into use or a new initiative please visit <https://folkestone.works/funding-and-support/folkestone-hythe-high-streets-fund/>



CALLING ALL DYMCHURCH RESIDENTS! **YOUR ON-CALL FIRE STATION IS NOW RECRUITING...**

On-call firefighters are a vital part of today's Fire and Rescue Service. They are not permanently based at a fire station, and instead carry a pager and respond to emergency incidents from the local station.

On-call crews receive an annual wage to reflect the time they commit to being available, plus additional payments for certain activities including the initial foundation course and on-going training. They often have other jobs, but must be able to provide availability known as "on-call" cover around the stations crewing model.

Recruitment at Dymchurch fire station is currently open, and the crew are looking for local residents to apply and become on-call firefighters. If you live within 5 minutes travelling time of Dymchurch fire station, you may be eligible to apply!

If you'd like further details on the role, and how to apply, please contact the Dymchurch Watch Manager James Kirk at james.kirk@kent.fire-uk.org or visit and apply directly via www.kent.fire-uk.org/oncall

Dymchurch gets a new mosaic tribute



The tutors' team from New Romney's Teach Me Courses descended on Dymchurch recently to complete a large mosaic that's destined for St Peter and St Paul Church. The creation of the mosaic is part of the Marsh Mosaics project, funded through the Fifth Continent and the Kent Wildlife Trust, which will see 10 Romney

Marsh churches adorned with the new mosaic plaques. The mosaics workshops were held over three days, two in Dymchurch Primary School and one in the gardens of the Ship Inn opposite the church.

During the two days at Dymchurch Primary, groups of children learned first how to make mosaic coasters and then work on the large mosaic. The day at the Ship Inn was for local adults to come along and lend a hand.

Dymchurch Parish Councillor, Sandra Leverick (pictured), was on hand to lend assistance to the local people who'd been enlisted to help with making the mosaic. She said, "It's wonderful to see local people engaged in this project", she then added "we've all learned more about local flora and fauna, as well as the church, from working on the mosaic. Heading the creative team is Yolanda Houston, founder of Teach Me Courses. She said, "When we started Teach Me, the idea was to engage local people in both traditional and new arts and crafts. The Marsh Mosaics project is an extension of that ethos".

Participants are first given a small coaster to make in mosaics, before they move on to work on the large pieces. Each large mosaic has thousands of tesserae (the tiles used in mosaics are referred to as tesserae because they don't have to be tiles – they can also be bottle caps, broken china, buttons or all sorts of small objects).



FUNDING AVAILABLE

As we all start to emerge from lock down this is a reminder to community groups that there is funding available to support your activities and events.

District Councillors hold a ward budget which is distributed each year. Details of this fund can be viewed and applied for at the District Council website using the following website address

www.folkestone-hythe.gov.uk/community/community-funding/ward-budget

Dymchurch Parish Council are enthusiastic about supporting local groups and good causes and to this end are pleased to announce a new Grant Award Policy which came into force on the 1st April 2021.

You can read the full policy and obtain an application form at our web site www.dymchurch.org or directly through this link if you are reading the online version. [attachments.asp \(hugofox.com\)](#)

If you require any further information please contact the Parish Clerk on dymchurchpc@outlook.com

Visit our website at www.dymchurch.org for more information

HELP KEEP OUR VILLAGE CLEAN AND TIDY AND SET AN EXAMPLE TO OUR VISITORS

PLEASE TAKE YOUR LITTER HOME WHERE POSSIBLE TO SAVE OVER FILLING COUNCIL REFUSE BINS DURING THE SUMMER SEASON – THANK YOU



THE POWER OF FLOWERS

At the end of May the Parish Council took delivery of 35 colourful hanging baskets to brighten the High Street and welcome visitors over the summer months. The baskets were planted up and cared for by students at the Canterbury Oast Trust, including Murray and Michelle (pictured below in the nursery) who had been carefully nurturing the plants for several weeks. The Parish Council were delighted to be able to support the work of the Canterbury Oast Trust (COT) who are a charity supporting people with learning disabilities in Kent. Many people will know them for operating the Rare Breeds Centre near Ashford.



To find out more about the work of the Canterbury Oast Trust please visit their website at <https://www.c-o-t.org.uk>

BEACH ART RETURNS TO DYMCHURCH



Amazing designs created by artist Jon Foreman returned to Dymchurch Beach this year as part of Jam on the Marsh. These mesmerising masterpieces which exist for just a few hours between tides seemed to hypnotise those passing who seemed powerless to continue their walks along the wall. Further information about the artist can be found at <https://sculpttheworld.smugmug.com>

PARISH COUNCIL SNIPPETS

Over the next few months the disabled carpark at the sea wall (owned by the Environment Agency) will be managed by the District Council to ensure that it is available for disabled drivers who wish to access the sea wall and beach.

A traffic regulation order will be in force and for those who are parking illegally fines will be issued.

A recent meeting at the District Council has been held to discuss raising of parking fines to try and reduce the illegal parking by those visiting our

village over the summer months.

Parish Council meetings will now be held physically as required by law, but to support those who are concerned about mixing with others, the public will still be able to attend on line. Please see the website for details.

Dymchurch Parish Council

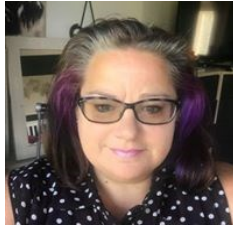
Your local council working locally for you



Cllr. Chris McCreedy
Chair



Cllr. Deana Coker
Vice Chair



Cllr.
Sandra Leverick



Cllr. Dan Noonan



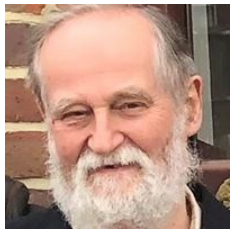
Cllr. Marc Wright



Cllr. Dougie Young



Cllr. John Carr



Cllr. John Williams



Cllr. Cathy Young

DYMCHURCH PARISH COUNCIL CONTACT DETAILS

If you have any queries regarding local issues, or any other matters you wish to raise, you can contact Dymchurch Parish Council as follows:

In writing to

The Clerk, Dymchurch Parish Council,
13 Orgarswick Avenue
Dymchurch TN29 0NX

By E mail- dymchurchpc@outlook.com

By Phone- 01303 872 708

If you wish to contact an individual Councillor please contact the Clerk.
Council meeting dates are published.

Please check our website and notice boards if you wish to attend a meeting in person or on line.

All are welcome to do so.

If you have any District or County Council issues that you wish to raise please contact the following with your concerns

KENT COUNTY COUNCILLOR

ANDY WEATHERHEAD

Andy.Weatherhead@kent.gov.uk

FOLKESTONE AND HYTHE DISTRICT COUNCILLORS

TERRY MULLARD

terry.mullard@folkestone-hythe.gov.uk

IAN MEYERS

ian.meyers@folkestone-hythe.gov.uk

**Kent
County
Council**
kent.gov.uk



KCC COMMUNITY WARDEN

Jon Lodge can be contacted on 07969 583915

or Jon.Lodge@kent.gov.uk

For help and advice on home security and safety and how to access Council services

Supporting you in the local community



DYMCHURCH PARISH COUNCIL WEBSITE

OUR NEWSLETTER WILL BE PUBLISHED EVERY
QUARTER SO WHY NOT KEEP UP TO DATE BY USING
OUR NEW WEBSITE THIS CAN BE FOUND AT

www.dymchurch.org

Help make our website more interesting.
Are you a budding photographer and want to show off your artistic skills.
If you have any photographs of Dymchurch and the surrounding area that you could donate to us for use on the website please email them to dymchurchpc@outlook.com